



Flight Plan & Site Survey

Created using **RPAS Wilco®**

Report Type:	Preview Version
Reference No:	F62572
Title:	Mission 2025-08-19
Pilot Name:	
Pilot Certificate:	August 20, 2025 9:00 AM
Flight Start:	August 20, 2025 2:00 PM
Flight End:	50° 50' 28.16" N (50.841)
Flight Area (Latitude):	120° 16' 2.43" W (-120.267)
Flight Area (Longitude):	Alt: 400 ft - Rad: 100 m (0.05 nm)
Altitude - Radius:	UNCONTROLLED
Classification:	CZVR - 604-586-4500
FIR - Contact:	

Please ensure you received all required authorizations prior to flight.

Disclaimer

This Site Survey was created using RPAS Wilco by AIM Robotics. The flight plan contained is intended only for RPAS flights on the date/time and location specified. The user accepts all responsibility for the accuracy and completeness of the information contained.

For the complete Terms & Conditions, see

<https://rpaswilco.com/#/tnc>

Included

Site Survey

Obstacles (if available)

Nearby Aerodromes

Canadian Aviation Regulations

GFA

Aerodrome Supplements

-METAR & TAF (if available)

-NOTAMs

-CFS

RPAS WILCO

FLIGHT TAG #1



\$448 VALUE

LIMITED-TIME BONUS OFFER!

FlySafe Pro Kit Included

Buy DJI Mavic 4 Pro Fly More Combo



[CLICK HERE](#)







Flight Map



RPAS Specification

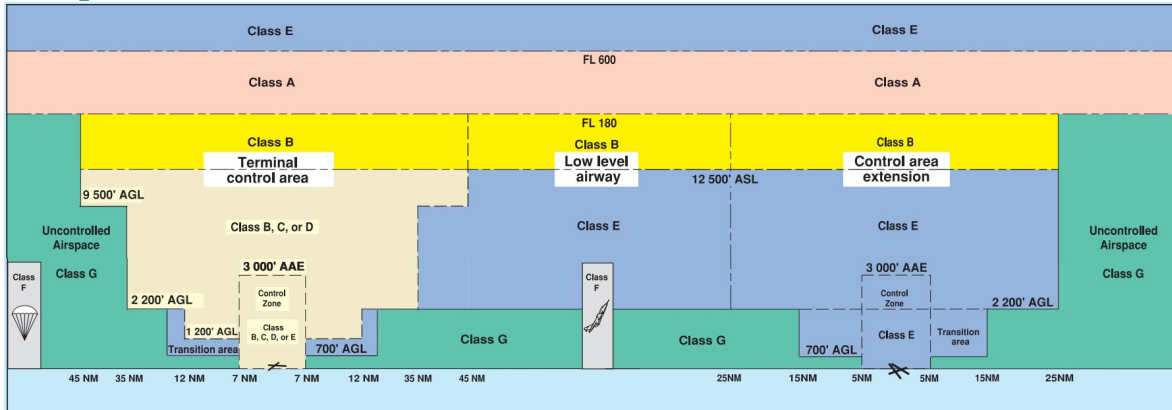
- **Manufacturer:**
MAAC
- **Model:**
Model Airplane
- **Registration Number:**
C-2305607517
- **Eligible for advanced operations:**
Yes
- **Manufacturer RPAS safety assurance:**
 - **Controlled Airspace:** Yes
 - **Near People:** N/A
 - **Over People:** N/A

Mission Location Details

		Latitude	Longitude
	MODEL	50° 50' 28.16" N (50.841)	120° 16' 2.43" W (-120.267)
	Pilot Mark Betuzzi	50° 50' 26.80" N (50.8408)	120° 16' 5.23" W (-120.2681)



Airspace Classification



Overlying Airspaces

Class	Name	Floor	Ceiling
E	Williams Lake, BC CAE	8000MSL	12500MSL
B	Williams Lake, BC CAE	12500MSL	18000MSL
E	T650 Airway	2200AGL	12500MSL
B	T650 Airway	12500MSL	18000MSL
E	T611 Airway	2200AGL	12500MSL
B	T611 Airway	12500MSL	18000MSL
E	T687 Airway	2200AGL	12500MSL
B	T687 Airway	12500MSL	18000MSL
E	Kamloops, BC TA	700AGL	12500MSL
E	Kamloops, BC TA	1600AGL	12500MSL
B	Kamloops, BC TA	12500MSL	18000MSL
B	Kamloops, BC TA	12500MSL	18000MSL
E	T695 Airway	2200AGL	12500MSL
B	T695 Airway	12500MSL	18000MSL
E	T789 Airway MEA: 12700MSL	2200AGL	12700MSL
B	T789 Airway MEA: 12700MSL	12700MSL	18000MSL

Nearest Aerodromes & Distance from Operation

KAMLOOPS (CAH7 - WATERDROME - Reg)	Lat: 50.7	Long: -120.433	19.547KM 10.55NM SW
KAMLOOPS (CYKA - AERODROME - Cert)	Lat: 50.703	Long: -120.448	19.935KM 10.76NM SW
KAMLOOPS (ROYAL INLAND HOSPITAL) (CBC4 - HELIPORT - Cert)	Lat: 50.669	Long: -120.333	19.692KM 10.63NM S

CANADA WATER AERODROME SUPPLEMENT

Effective 0901Z 17 April 2025 to 0901Z 19 March 2026

B90 AERODROME/FACILITY DIRECTORY

JENKINS COVE NB — See KARS / JENKINS COVE

JENNY’S LANDING ON — See KENNISIS LAKE / JENNNY’S LANDING

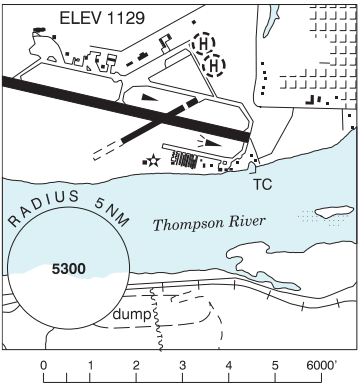
JOHN’S BAY ON — See LAKE ROSSEAU / JOHN’S BAY

KAMANISKEG LAKE ON — See COMBERMERE / KAMANISKEG LAKE

KAMLOOPS BC

REF	N50 42 W120 26 3WNW 17°E (2013) UTC-8(7) Elev 1129’ A5004
OPR	Kamloops Aprt Ltd 250-376-3613 Reg
PF	A-1,2,3,6 C-4,5 at adj land A/D
CUST	AOE/15 16-08Z† 888-226-7277
FLT PLN	
FIC	Kamloops 866-WXBRIEF (Toll free within Canada) or 866-541-4101 (Toll free within Canada & USA)
SERVICES	Float cart chg. Call out chg may be levied for one or more svcs. Mountaineer Svc 250-376-3800, Spring Avn 250-554-2616.
FUEL	100LL, JA-1 avbl at adj A/D, acft removal fr water rqrd, refuelling at dock proh.
OIL	Shell 250-376-7633 or 250-819-9345 PN. Executive Flight Centre 250-376-9069.
S	80, 100, 120 1 (ltd), 2,3 (at adj land A/D), 5
A/D DATA	Open water Apr-mid Nov. Depth 12’, sand bottom, current 5 kt. Spring freshets raise water level by 12’. Buoys, ramp & beach.
COMM	
RADIO	125.7 297.0 (V) (emerg only 250-376-7941)
RCO	Pacific rdo 123.375 (FISE) 126.7 (bcst)
MF	rdo 125.7 5NM 4100 ASL centred on land A/D (CAR 602.98)
PRO	Seaplane conform to land A/D tfc pattern: Rgt hand circuits Rwys 04, 22 & 27 (CAR 602.96). E departures climb to 2200 ASL or river junction before turning N.
CAUTION	Migratory bird activity in vic of A/D. Seasonal boat tfc. Dur low water sand bars hazardous; oprg channel swings from N side of river E of dock, to S side W of dock. Adj land A/D. Class "E" CZ to 5NM radius, 4100 ASL (2900 AGL).

CAH7



KAMLOOPS FIC – RCO

Cross reference to PACIFIC RADIO – RCO (New)

KAMLOOPS FSS – RCO

Victoria 119.7 (RAAS) 08-14Z† (N48 38 W123 25)

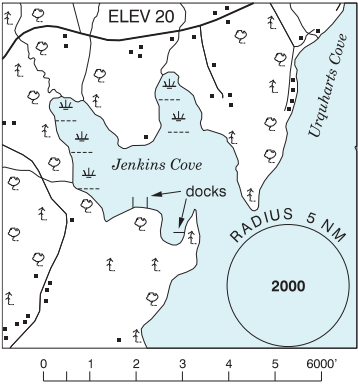
CANADA WATER AERODROME SUPPLEMENT

Effective 0901Z 17 April 2025 to 0901Z 19 March 2026

KARS / JENKINS COVE NB

CJO3

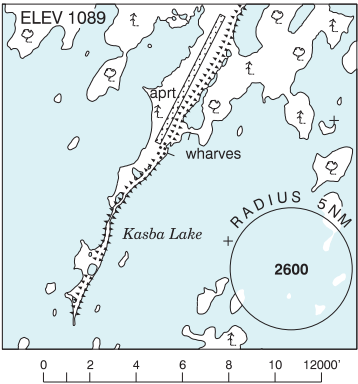
REF	N45 35 38 W65 57 25 1.3ESE 17°W (2017) UTC-4(3) Elev 20' A5003
OPR	Richard Pattie 506-485-1122 Reg
PF	B-1 C-2,5
FLT PLN	
FIC	London 866-WXBRIEF (Toll free within Canada) or 866-541-4104 (Toll free within Canada & USA)
ACC	(IFR only) Moncton 506-867-7177 or 866-480-8200.
SERVICES	
S	5
A/D DATA	Open water May-Dec
COMM	
ATF	tfc 123.05 5NM 3000 ASL



KASBA LAKE NT

CJP5

REF	N60 17 W102 31 7°E (2013) UTC-6(5) Elev 1089' A5024 A5031
OPR	Kasba Lake Lodge 250-248-3572 Reg PPR
PF	B-1,2,5 PN Oprg Jun15-Sep 1
FLT PLN	
FIC	Edmonton 866-WXBRIEF (Toll free within Canada) or 866-541-4102 (Toll free within Canada & USA)
SERVICES	
FUEL	100LL, JA Prior arng thru Opr Jun 15 - Aug 15
A/D DATA	Open water Jun-Oct. Sand beach.
COMM	
ATF	UNICOM ltd hrs O/T tfc 122.8 5NM 4200 ASL

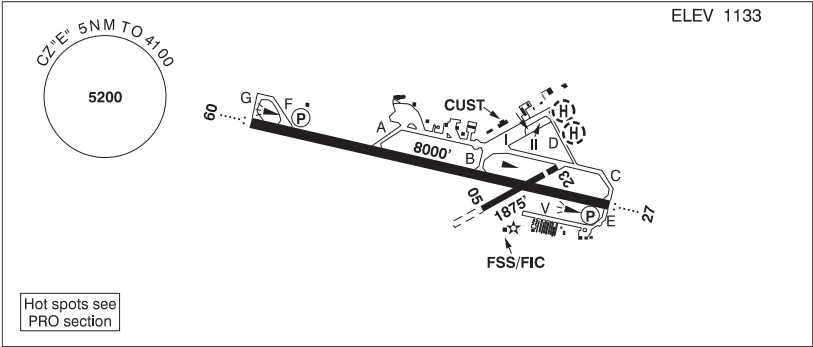


BRITISH COLUMBIA

AERODROME / FACILITY DIRECTORY

KAMLOOPS BC

CYKA



REF	N50 42 09 W120 26 55 5WNW 16°E (2016) UTC-8(7) Elev 1133' A5004 LO2 HI3 CAP RCAP
OPR	Kamloops Aprt Ltd 250-376-3613 Cert
PF	A-1,2,3,6 C-4,5
CUST	AOE/30 1630-0030Z± Mon-Fri exc hols 888-226-7277
FLT PLN	
FIC	Kamloops 866-WXBRIEF (Toll free within Canada) or 866-541-4101 (Toll free within Canada & USA) or 250-376-8392
WX	METAR H24. TAF H24, issue times: 01, 07, 13, 19Z.
SERVICES	Call out chg may be levied for one or more svcs
FUEL	100LL, JA-1 (FSII avbl)
OIL	80, 100, 120
S	1 (ltd), 2,3,4,5,6 (ltd)
ARFF	DESIGNATED CAT 6 14-08Z±, O/T 2 hr PN 250-376-3233 call out chg
PVT ADV	Shell 123.0 250-376-7633; Executive Flight Centre 122.85 250-376-9069
MIL CON	Executive Flight Centre Fuel 250-376-9069
RWY DATA	Rwy 09(087°)/27(267°) 8000x148 ASPH Rwy 05(045°)/23(225°) 1875x49 ASPH Thld 23 displ 249'.
RWY CERT	Rwy 05/23 AGN I Rwy 09/27 AGN IIIB
TWY CERT	Twy: D, E AGN II
TWY	Twy A, no vehicle ctl first 600' W of Apron I. Twy E: Unlgt
APRON	Apron 1: Uncontrolled, avbl to sked pax flt only. All acft must yield to acft in pushback from ATB. Prkg fees. Apron II: Uncontrolled, avbl for transient and itinerant prkg. All acft must yield to acft in pushback from ATB. Pilot/pax access via groundside Gate 10 only; no access/egress permitted via ATB. Prkg fees. Apron V: Uncontrolled, PPR for prkg on or within 25' of aprn.
RCR	FSS Win maint 13-08Z± O/T 2 hrs PN cost recovery. CRFI, PCN.
LIGHTING	09-AO(TE ME) P2, 27-AO(TE ME) P2 ARCAL-125.7 type K avbl when FSS clsd PAPI limitation/restriction. PAPI Rwy 09 to be used only within 4NM of thld; PAPI Rwy 27 to be used only within 4NM of thld. Twy D RR.

BRITISH COLUMBIA

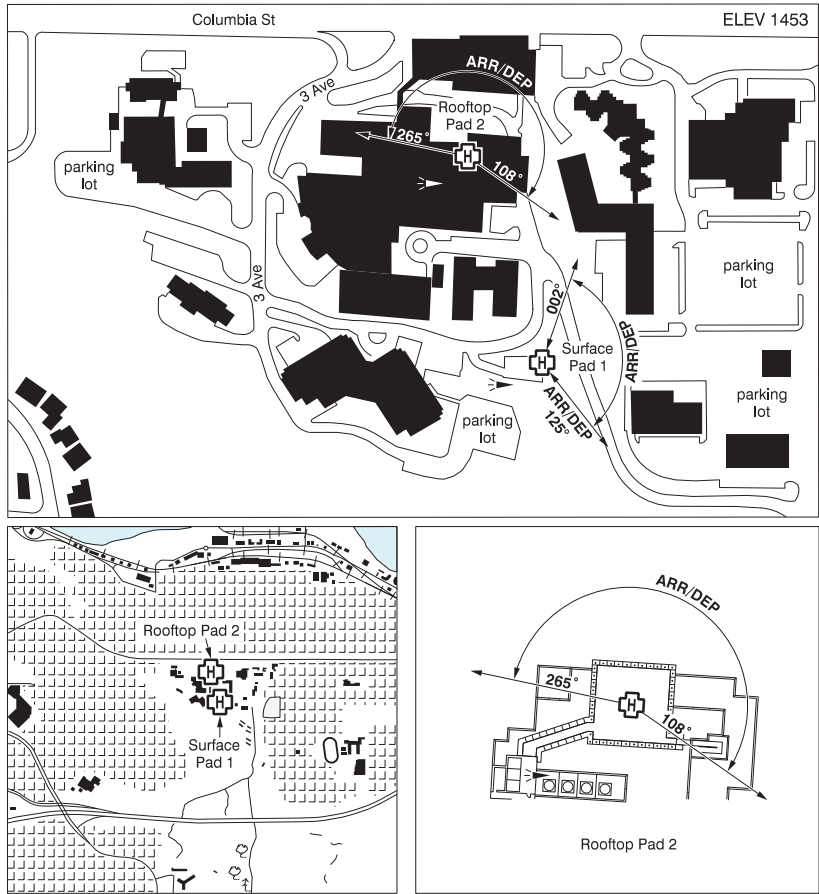
AERODROME / FACILITY DIRECTORY

KAMLOOPS BC (Cont'd) CYKA

COMM	
RADIO	125.7 PTC avbl (V) (emerg only 250-376-7941)
RCO	Pacific rdo 123.375 (FISE) 126.7 (bcst)
CLNC DEL	121.9 PTC avbl ltd hrs
MF	rdo 125.7 5NM 4100 ASL (CAR 602.98)
PAL	Vancouver Ctr 132.35 133.5 134.4 236.0
NAV	
DME	IKA 109.3 Ch 30 N50 42 14 W120 27 41 (1136')
	MT LOLO YKB 117.5 Ch 122 N50 48 03 W120 07 39 (5757')
ILS	IKA 109.3 (Rwy 09)
LOC	IPP 109.9 (Rwy 27)
PRO	<p>Pilots should refer to Canadian Airport Charts (CAC) to obtain details on established hot spots, prior to operating on maneuvering areas. CAC are available for free on the NAV CANADA website.</p> <p>Day: rgt hand circuits Rwys 05, 23 & 27 (CAR 602.96). Night: follow VTTC night circuit pro. Tkof and ldg in grass adj rwys by fixed-wing acft not auth.</p>
CAUTION	<p>Migratory bird activity in vic of A/D. Only pilots familiar with lcl terrain should use this aprt dur hrs of darkness. Ngt ops not recommended unless all 6 hazard beacons are oprg. Hi terrain reduces operational length of Rwys 09 and 27 PAPI.</p> <p>Painted & lgtd twr 1253 ASL (128 AGL) aprx 250' beyond Thld 05 and aprox 2710' NW rwy centreline. Fuel facility (tanks 80 AGL) aprx 0.5NM NE A/D; no low alt heli ops.</p>

KAMLOOPS (ROYAL INLAND HOSP) BC (Heli)

CBC4



REF	N50 40 09 W120 19 59 Adj 17°E (2012) UTC-8(7) Elev 1453' A5004
OPR	Interior Health Authority 250-374-5111 Cert PPR
PF	B-1,2,4 C-3,5,6
FLT PLN	
FIC	Kamloops 866-WXBRIEF (Toll free within Canada) or 866-541-4101 (Toll free within Canada & USA) or 250-376-8392
HELI DATA	Surface Pad 1: FATO 86' dia elevated TLOF 57' dia CONC Safety Area 115' dia elevated 17,000 lbs Max heli overall length 57.4' (CAR 602.96) Rooftop Pad 2: FATO 86' x 86' non-supporting TLOF 71' x 71' CONC Safety Area 115' x 115' 18,000 lbs Max heli overall length 57.4' (CAR 602.96)
RCR	Opr
LIGHTING	Surface Pad 1: RY(LO) green ARCAL-125.7 type J Rooftop Pad 2: RW(ME) green LED ARCAL-122.9 type K

KAMLOOPS (ROYAL INLAND HOSP) BC (Heli) (Cont'd)

CBC4

COMM	<div>MF A/G</div> <div>Kamloops rdo 125.7 5NM 4100 ASL centered on Kamloops aprt (CAR 602.98). Hosp Security PEPCORD1 148.655 FM 3 min PN</div>
PRO	<div>Surface Pad 1 Arr/dep 125° fr heli, (H3) (CAR 602.96). Arr/dep 002° to 125° fr heli, (H1) (CAR 602.96). Rooftop Pad 2 Arr/dep 265° to 108° fr heli (H1) (CAR 602.96).</div>
CAUTION	<div>Unlgtd embankment to 40', adj SE. Marked & lgtd hosp penthouse elevator aprx 30' W of rooftop pad safety area.</div>

Canadian Aviation Regulations

Division III — General Operating and Flight Rules

For full listing please visit : <https://laws-lois.justice.gc.ca/eng/regulations/SOR-96-433/FullText.html#s-901.27>

Visual Line-of-sight

- **901.11 (1)** Subject to subsection (2), no pilot shall operate a remotely piloted aircraft system unless the pilot or a visual observer has the aircraft in visual line-of-sight at all times during flight.
- **(2)** A pilot may operate a remotely piloted aircraft system without the pilot or a visual observer having the aircraft in visual line-of-sight if the operation is conducted in accordance with a special flight operations certificate — RPAS issued under section 903.03.

Procedures

- **901.23 (1)** No pilot shall operate a remotely piloted aircraft system unless the following procedures are established:
 - **(a)** normal operating procedures, including pre-flight, take-off, launch, approach, landing and recovery procedures; and
 - **(b)** emergency procedures, including with respect to
 - **(i)** a control station failure,
 - **(ii)** an equipment failure,
 - **(iii)** a failure of the remotely piloted aircraft,
 - **(iv)** a loss of the command and control link,
 - **(v)** a fly-away, and
 - **(vi)** flight termination.
- **(2)** If the manufacturer of the remotely piloted aircraft system provides instructions with respect to the topics referred to in paragraphs (1)(a) and (b), the procedures established under subsection (1) shall reflect those instructions.
- **(3)** No pilot shall conduct the take-off or launch of a remotely piloted aircraft unless the procedures referred to in subsection (1) are reviewed before the flight by, and are immediately available to, each crew member.
- **(4)** No pilot shall operate a remotely piloted aircraft system unless the operation is conducted in accordance with the procedures referred to in subsection (1).

Site Survey

901.27 No pilot shall operate a remotely piloted aircraft system unless, before commencing operations, they determine that the site for take-off, launch, landing or recovery is suitable for the proposed operation by conducting a site survey that takes into account the following factors:

- **(a)** the boundaries of the area of operation;
- **(b)** the type of airspace and the applicable regulatory requirements;
- **(c)** the altitudes and routes to be used on the approach to and departure from the area of operation;
- **(d)** the proximity of manned aircraft operations;
- **(e)** the proximity of aerodromes, airports and heliports;
- **(f)** the location and height of obstacles, including wires, masts, buildings, cell phone towers and wind turbines;
- **(g)** the predominant weather and environmental conditions for the area of operation; and
- **(h)** the horizontal distances from persons not involved in the operation.

Operations at or in the Vicinity of an Aerodrome, Airport or Heliport

- **901.47 (1)** No pilot shall operate a remotely piloted aircraft at or near an aerodrome that is listed in the *Canada Flight Supplement* or the *Water Aerodrome Supplement* in a manner that could interfere with an aircraft operating in the established traffic pattern.
- **(2)** Subject to section 901.73, no pilot shall operate a remotely piloted aircraft at a distance of less than
 - **(a)** three nautical miles from the centre of an airport; and
 - **(b)** one nautical mile from the centre of a heliport.
- **(3)** No pilot shall operate a remotely piloted aircraft at a distance of less than three nautical miles from the centre of an aerodrome operated under the authority of the Minister of National Defence unless the operation is conducted in accordance with a special flight operations certificate — RPAS issued under section 903.03.

Records

- **901.48 (1)** Every owner of a remotely piloted aircraft system shall keep the following records:
 - **(a)** a record containing the names of the pilots and other crew members who are involved in each flight and, in respect of the system, the time of each flight or series of flights; and
 - **(b)** a record containing the particulars of any mandatory action and any other maintenance action, modification or repair performed on the system, including
 - **(i)** the names of the persons who performed them,
 - **(ii)** the dates they were undertaken,
 - **(iii)** in the case of a modification, the manufacturer, model and a description of the part or equipment installed to modify the system, and
 - **(iv)** if applicable, any instructions provided to complete the work.
- **(2)** Every owner of a remotely piloted aircraft system shall ensure that the records referred to in subsection (1) are made available to the Minister on request and are retained for a period of
 - **(a)** in the case of the records referred to in paragraph (1)(a), 12 months after the day on which they are created; and
 - **(b)** in the case of the records referred to in paragraph (1)(b), 24 months after the day on which they are created.
- **(3)** Every owner of a remotely piloted aircraft system who transfers ownership of the system to another person shall, at the time of transfer, also deliver to that person all of the records referred to in paragraph (1)(b).